

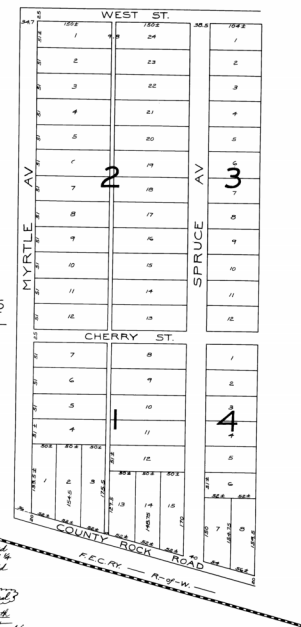
COPY

PLAT OF
THE
COLE —
ADDITION
TO
POMPANO

Comprising —
— A Portion of —
S. 1/2 of SW 1/4 of N.E. 1/4 of Sec 35
— Tr. 48 S. R. 42 E. —
Containing — 12 Ac. ±
Approximate Scale 80 ft. = 1 inch.

FCB ^{under CE}
1/14/11

State of Florida
County of Palm Beach
Before the undersigned a Notary Public
personally appeared Walter D. Cole and acknowledged
that the within plat is a portion of the S. 1/2 of SW 1/4
of N.E. 1/4 of Sec. 35, Tr. 48 S. R. 42 E. and is well defined
and dedicated by him fully voluntarily and
for the purposes as expressed therein.
Witness my hand and seal this 14th day of January, A.D. 1911.
Notary Public
James E. Guire



STATE OF FLORIDA
COUNTY OF PALM BEACH
This instrument was filed for record No. 5076
on September 11, 1911, and is
corrected in the County of Palm Beach
in 11-11-11 of 1911
witnesses
Notary Public
James E. Guire

100
Copied by
BIDWELL & HOLSTEN
COUNTY ENGINEER
Palm Beach
Checked by G.F.

PZB

PZ25-05000005
01/28/2026